

TECHNIX

Rubber and Plastics Limited

safagrass

an environmentally friendly, non-slip,
impact absorbing safety and footway surface



solutions for
all your safety
surfacing needs

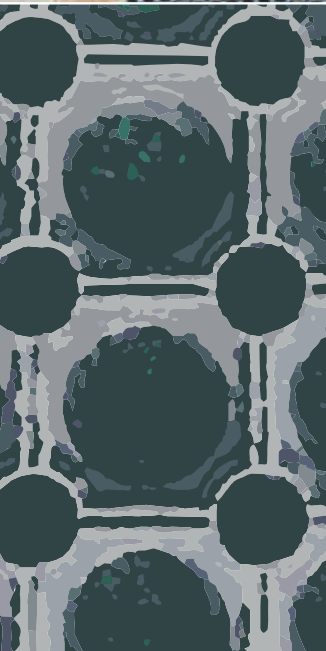
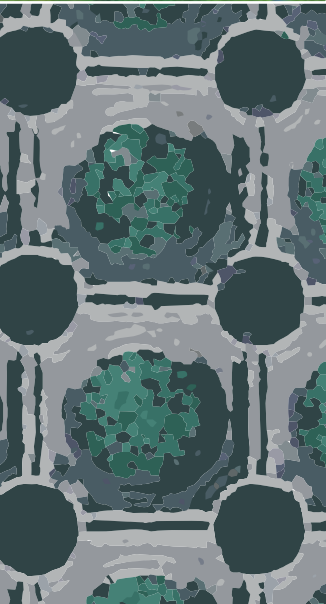


Certificate number 1569/97

a company with experience and expertise
locally, nationally and internationally

freephone 0800 216633

An environmentally friendly, non-slip, impact absorbing safety surface



- Absorbs shock and noise
- Critical fall height of 3 metres, tested by RAPRA
- Protects floor and equipment
- Moulded non-slip cellular structure with excellent durability and comfort
- Requires no special skills or tools allowing a quick and easy installation
- No costly base works (as required for conventional tiles or wet pour)
- Ideal for green field sites, disappears from view once turf has re-grown
- Can be used on flat or contoured landscapes
- Suitable for all weather, extreme temperatures and resists wind uplift
- Large openings of 2.5cm diameter allow liquid and debris to drain keeping surface dry and clean
- Tested to BS EN 1177:1998 3 Metre Critical Fall Height
- Wheelchair and pushchair accessible

The quality policy of Technix Rubber and Plastics Limited is to provide products and services which give total customer satisfaction.

We recognise that the continued future success of the company depends on the quality, price and delivery of our products. The quality of our products must be of the highest possible standard, if we are to meet the ever increasing

levels set by our competitors and demanded by our customers. Our intention is to provide goods which meet our customer design criteria and requirements.

Technix was established in 1989 with technical staff who have over thirty years experience, and has grown to become one of the most innovative companies of its kind. We offer a cost effective and efficient solution to any surfacing problem.

The company continues to invest heavily in the latest technology and in comprehensive staff training.

Clients include local authorities, parish councils, schools, nurseries, landscapers, breweries, caravan sites, golf courses, ski slopes, hotels, theme parks and play equipment manufactures.



Ideal for fitness/fun trails, cableways, most multi function play frames, springers, swings . . .

Safagrass installation guidelines



- 1** Mark out the area to be covered by Safagrass.
- 2** Safagrass can be laid directly onto existing grassed areas. The area should be filled in if uneven with topsoil and be compact.
- 3** Sow grass over this area.
- 4** (OPTIONAL) For soft (boggy) areas lay an open coarse membrane (Order ref: GSB). Leave about 150mm in from the outside edges.
- 5** Now lay out the Safagrass mats over the area to be covered, cutting around any equipment or obstacles if necessary.
- 6** All adjoining edges to be glued. Ensure mats are dry prior to gluing. Fasten edges together using cable ties and trim.
- 7** Cut into the ground about 75mm deep along the outside edge of the perimeter area to be covered using a grass edge cutter or similar.
- 8** Roll back the Safagrass mat and starting about 150mm in from the outside edge of the mats, use a spade and cut the top turf away in the direction of the 75mm deep cut finishing at the depth. This will leave a wedge shape channel. Continue around the perimeter of the laid mats.
- 9** Roll the Safagrass mat back and down into the channel and pin the edge through the small holes in the mat and into the ground. Place a small amount of the glue into the hole before tapping the pin. Use 8 pins per mat. You should now have a ramp edge all the way around. Now cover the ramped area with topsoil and seed. Bring the level back up to it's original level and flatten into the existing ground.



Requirements

Ensure 3 pins along perimeter length. One bottle of glue is sufficient for 18 mats.

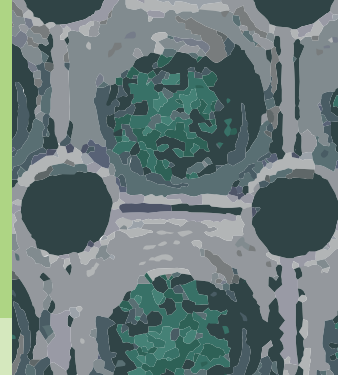
Tools: 5 metre tape measure, stanley knife, rubber gloves, hammer, grass edge cutter, spade, cable ties, grass seed, rechargeable drill and 6mm drill bit

Product description codes

SAF2001	1.5m x 1m mat
TEXILON 1165	Adhesive, 1.1kg bottle
G20	Galvanised pin, 20cm
P 15	Polypropylene peg, 15cm
C/tie	Black cable tie, 20cm x 4.4
GSB	Ground stabilising mesh, 50m x 2m rolls

Please check the suitability of this product prior to installation as the CFH figure will be affected by soil type, moisture and grass. Ideal for fitness/fun trails, cableways, most multi-function play frames, springers and swings.

Technix can offer a nationwide installation service, using trained and accredited contractors.



**"The first choice &
most competitive safety surface available"**

Lawnmat Light Duty Interlocking Rubber Tile

size 0.91m x 0.91m x 12.5mm thick

An environmentally friendly, impact absorbing safer surface

- Absorbs shock and noise
- Critical fall height of 2.1 metres, tested by CST
- Protects floor and equipment
- Interlocking-requires no special skills or tools allowing a quick and easy installation
- No costly base works (as required for conventional tiles or wet pour)
- Ideal for green field sites, disappears from view once turn has re-grown
- Can be used on flat or contoured landscapes
- Suitable for all weather and extreme temperatures
- Large openings of 2.5cm diameter allow liquid and debris to drain keeping surface dry and clean
- Tested to BS EN 1177: 1998 Critical Fall Height



Ideal for home & lighter duty applications



Please check the suitability of this product prior to installation as the CFH figure will be affected by soil type, moisture and grass.

Wet Pour Safety Surfaces

'Wet-Pour' is a seamless, maintenance free surface. The rubber granules and resin are mixed and laid on site to produce a porous safety surface, **ideal for children's play areas.**



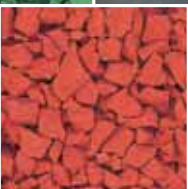
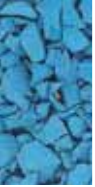
Create **affordable**, & **imaginative** play areas which are **safer** & a **more fun** place for children

Where can we **install** Techflex?

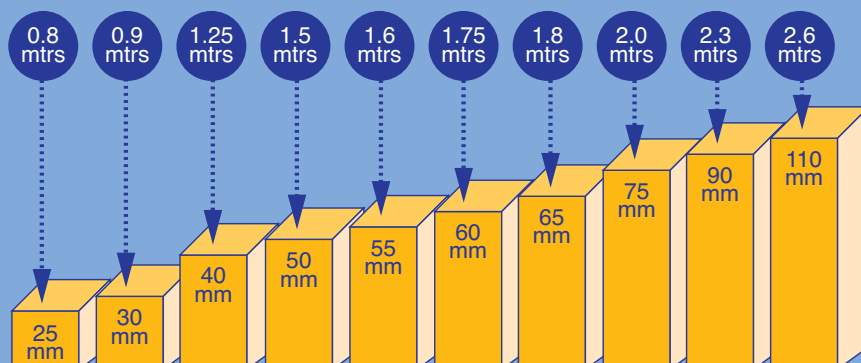
We can lay surfaces directly over tarmac, paving slabs, concrete etc. Grass and bark are easily converted by installing a concrete or stone base upon which the rubber can be laid.

Installing a 20mm layer of Wet-Pour is an ideal way to make tarmac areas safer. This will provide a cushioned surface for bikes, trikes and ball games.

The company guarantees the use of the highest quality materials, the highest standards of installation and professional workmanship - the company adheres to quality system BS EN ISO 9002:1994, the mark of quality assurance.



Critical Fall Heights



All installations subject to a full 5 year guarantee

All surfacing is installed to British Standards
BS 7188:1989 &
BS EN 1177:1998



Full range of inserts include:
Hopscotch, Spelling Game, Birds, Water Animals, Dinosaurs, Snake Games, Zoo Animals, People, Shapes, Space and Weather, Numbers and Letters, Feet and Hands and Aeroplanes. We can also design inserts according to your specification.

Always there to help you



Technix prides itself in its customer support. We have a dedicated team of pre-sales engineers who are able to offer unlimited advice on all safety issues, planning and design. They are able to give guidance on product selection and installation tips, thus ensuring the optimum and most cost effective protective solution. Our firm commitment ensures that our engineers are always available to visit any of our customers, wherever they may be located. We are here to ensure you choose the correct protection system at the right cost.



Free site surveys

'wet pour' Porous Safety Surfacing



Wet pour base specification (variable thickness 30mm & over)

■ PCC Edging

Kerbing will be with rounded edge to the outside. Flat top also acceptable. Edging to be bedded and haunched with class E concrete to an even plane. Overall base preferably installed level in all directions.

In any event it must not exceed a fall of 1:10

■ Tanalised Timber

Tanalised timber edgings may be used 100mm x 25mm

■ M.O.T. Type 1 Stone

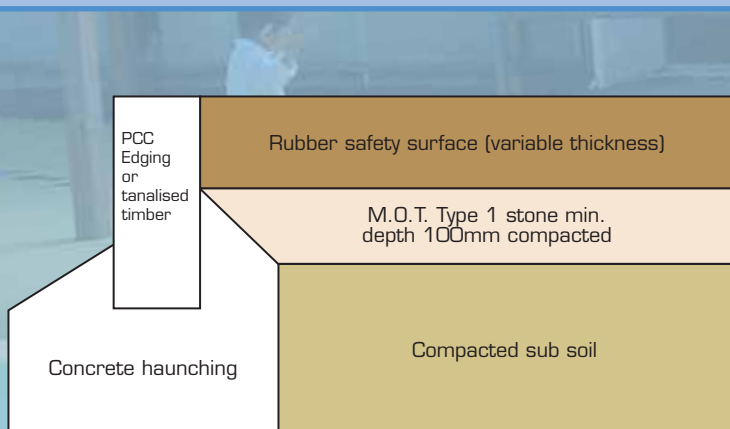
Compacted to a depth of 100mm (minimum) subject to sub-soil conditions. Finished compacted stone level to be equal to thickness of surfacing below the top of edging. Deviation to be no greater than 10mm over a 3 meter straight edge.

Tolerance +0mm / -10mm

■ Geotextile Fabric (if required)

A geotextile Membrane (not polythene) laid onto excavated sub-soil pit, prior to M.O.T. Type 1 stone infill, and overlapped by 100mm (minimum) where necessary. Compaction of sub-soil is necessary prior to the laying of the fabric.

In no circumstances must sand or ballast be used as a blinding material.



A complete wet pour and ground work service is available from our professionally trained teams.

No job is too small or large. All installations subject to a full 5 year guarantee. Our system is also used around swimming pools, stables, golf courses and marine applications.

Technix Grass Protection Mesh

Grass protection mesh is a heavy duty mesh designed to withstand the loading of cars and lightweight trucks. Simply rolled out and pegged down for use, it is particularly suitable for temporary car parks, access routes or heavy pedestrian traffic.

Rolls
2mx20m
Black code BIKT.GPM
Green code GRTGPM
Weight 2.25 g/m²

Composition and manufacture

Mesh products are of extruded polymer construction; they are rot proof, chemical and fungi-resistant and UV stabilised.



Playground Tiles 1m x 1m

Impact playground tiles are moulded under pressure and high temperatures using rubber crumb and polyurethane binder. They are manufactured in range of thicknesses to respond to the various heights of playground equipment currently in use.

- Full side wall for sticking
- Full range of colours & thicknesses
- Recycled product
- Integral ramp edges

Playground equipment can also be supplied and installed.



Technical Help & Advice phone us FREE 0800 216633

- On site advice to solve customer problems
- Technical help to solve a special application
- Interpreting the needs of you, the customer
- Technical support through development and design of new products

Product Information and Conditions of Sale: Orders are accepted subject to the Company's Conditions of Sale, a copy of which is available on request and which are printed on the reverse side of all invoices. Whilst the Company has made every effort to ensure the details given in this catalogue are accurate at the time of publication, full technical specifications are not included and furthermore, the Company's policy in one of continuous improvement and the right is reserved to alter details and information as the need arises. Accordingly, the customer should check details and information he wishes to rely upon with the Company at the time of purchase. The Company cannot accept liability in respect of any errors or omissions herein contained or for any loss or damage, malfunction or consequential loss arising from reliance upon this Catalogue.

All Rights Reserved: No part of this publication may be reproduced or transmitted in any form or by any means including photocopying and recording, without the written permission of the copyright holder, application for which should be addressed to the publisher. Such written permission must be obtained before any part of this publication is stored in a retrieval system of any nature.

Official Distributor/Installer

TECHNIX
Rubber and Plastics Limited

City Commerce Centre, Marsh Lane, Southampton, Hampshire SO14 3EW United Kingdom
tel: +44 (0) 23 8063 5523 fax: +44 (0) 23 8063 5689 web: www.technix-rubber.com
freephone 0800 216633

